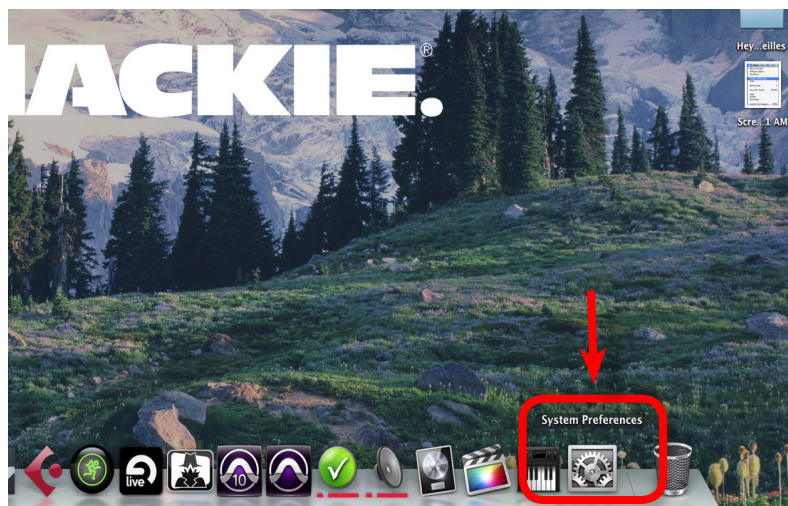


Bluetooth Setup Information And Troubleshooting

The Mackie FreePlay Personal PA uses Bluetooth technology to allow wireless control via an iPhone/iPod Touch or Android device with the FreePlay Connect app. You can also use simple Bluetooth connectivity to stream music from any Bluetooth enabled device.

Here are the steps to get your FreePlay connected to your Mac computer

1. Select the System Preferences in your Dock or click the Apple Logo in the top left of your screen and then select "System Preferences".



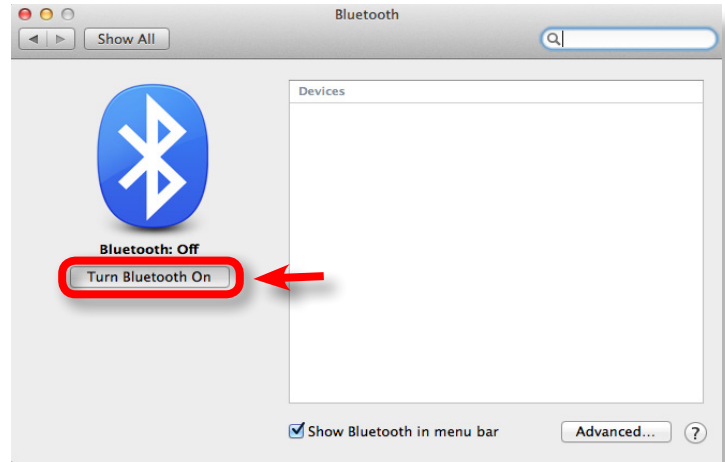
2. Select the Bluetooth icon in the middle of the Preferences windows.





Bluetooth Setup Information And Troubleshooting

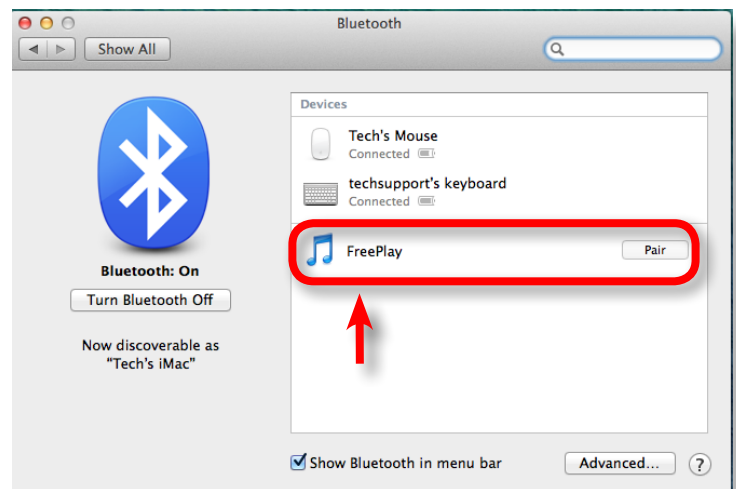
3. In your Bluetooth Preferences, make sure Bluetooth is turned on.



4. Press and hold the BT/ Aux button on the Mackie FreePlay rear panel. The button LED will illuminate and flash white while in pairing mode. While FreePlay is in pairing mode, simultaneously scan for Bluetooth devices on your computer. You will have 60 seconds to establish the Bluetooth connection. The LED will blink until a connection is made.



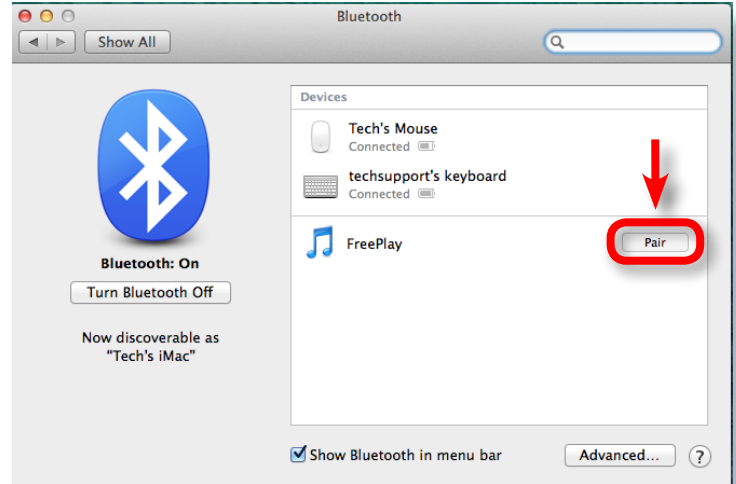
5. The Mac will automatically discover the FreePlay in the Bluetooth device list.



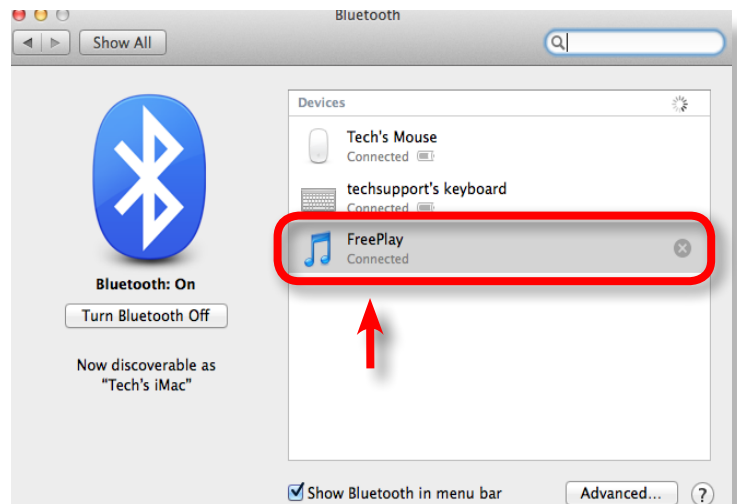


Bluetooth Setup Information And Troubleshooting

6. Click on the Pair button for the FreePlay device.



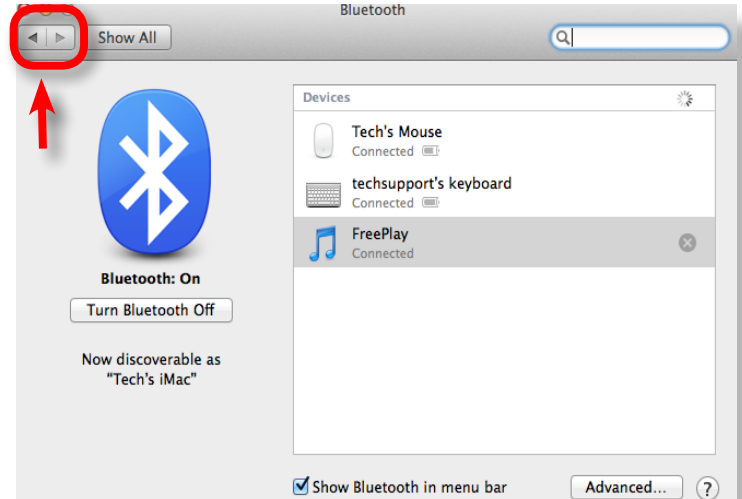
7. Once the pairing has completed you will see the word "Connected" below the FreePlay.





Bluetooth Setup Information And Troubleshooting

8. Now click the back button to return to the main System Preferences window.



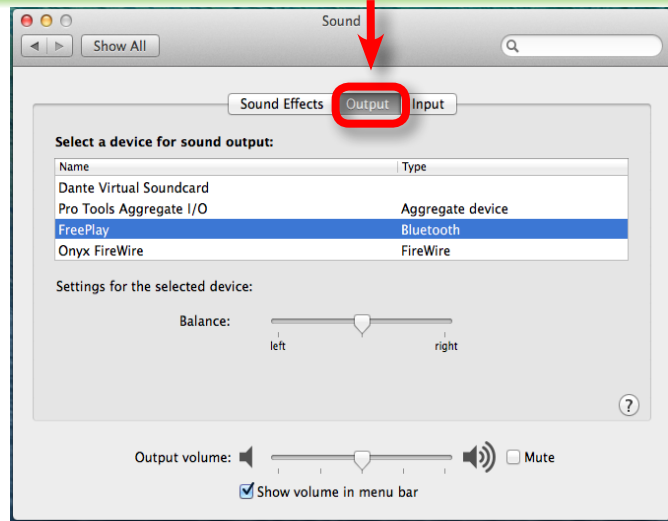
9. Click the Sound icon to access the Sound Preferences window.



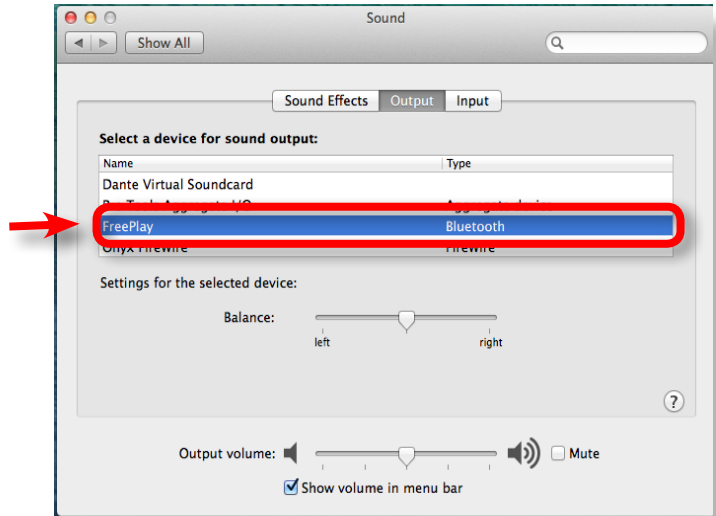


Bluetooth Setup Information And Troubleshooting

10. In the Sound Preferences window click the output tab.



11. Make sure to have the FreePlay selected.



12. Now you are ready to play some music from your Mac to your FreePlay.

